

Soldier John Cronk's Letter Describing Training Camp

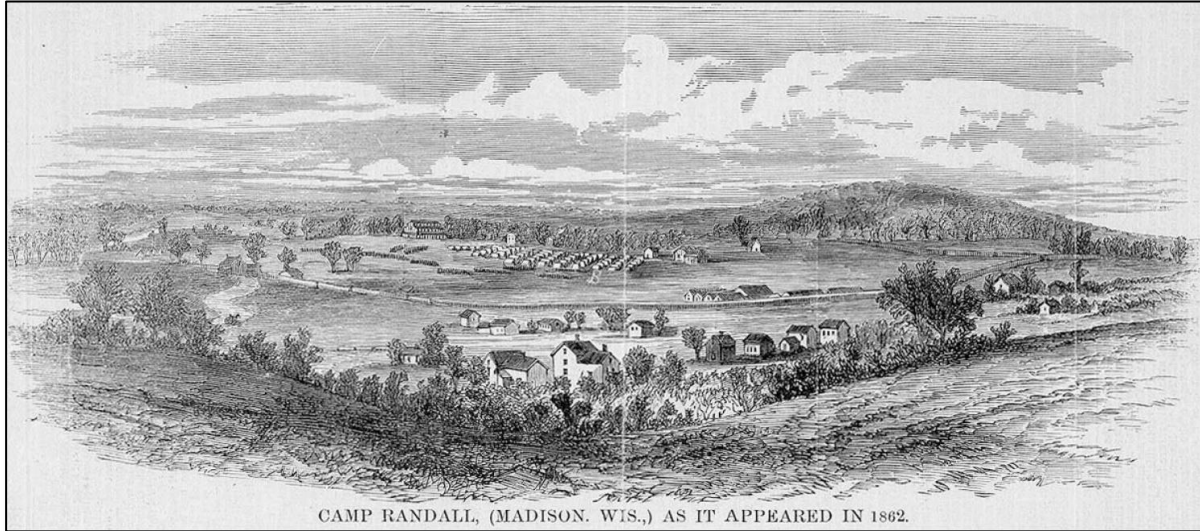
See a lesson plan related to this material on the [Wisconsin Historical Society website](http://www.wisconsinhistory.org).



WISCONSIN
HISTORICAL
SOCIETY

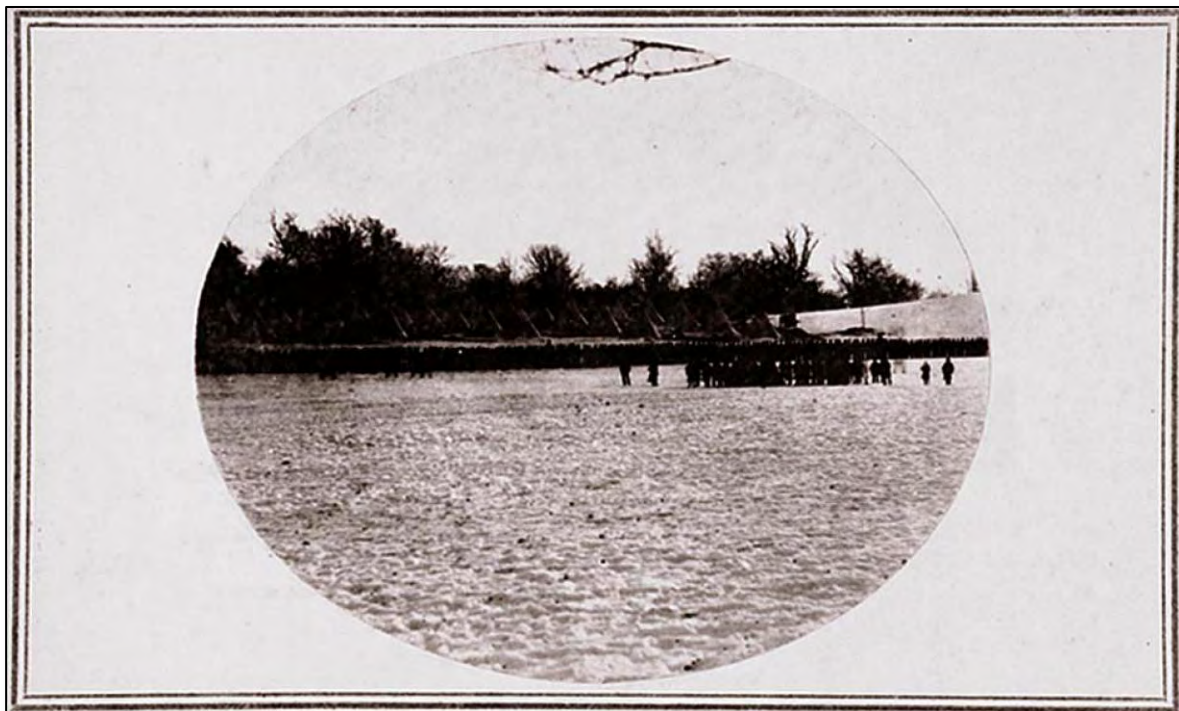
Images "Select Images of Camp Randall"

Looking southwest at the Camp Randall training grounds in 1862. WHI (X3)18122.



The only known photograph of Camp Randall as a Civil War training camp.

This photograph was taken south of the railroad tracks near the corner of Randall and University Avenues during the winter of 1861-1862. WHI (X3)50784.

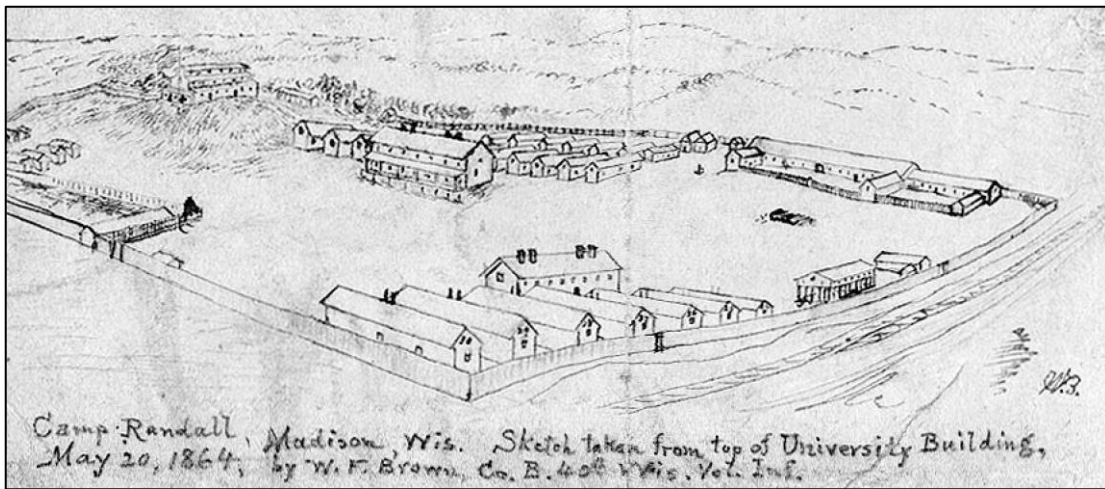


See more classroom materials and lesson plans on the Wisconsin Historical Society website.

Private John Gaddis of the Twelfth Wisconsin Infantry sketched the soldiers drilling at Camp Randall.

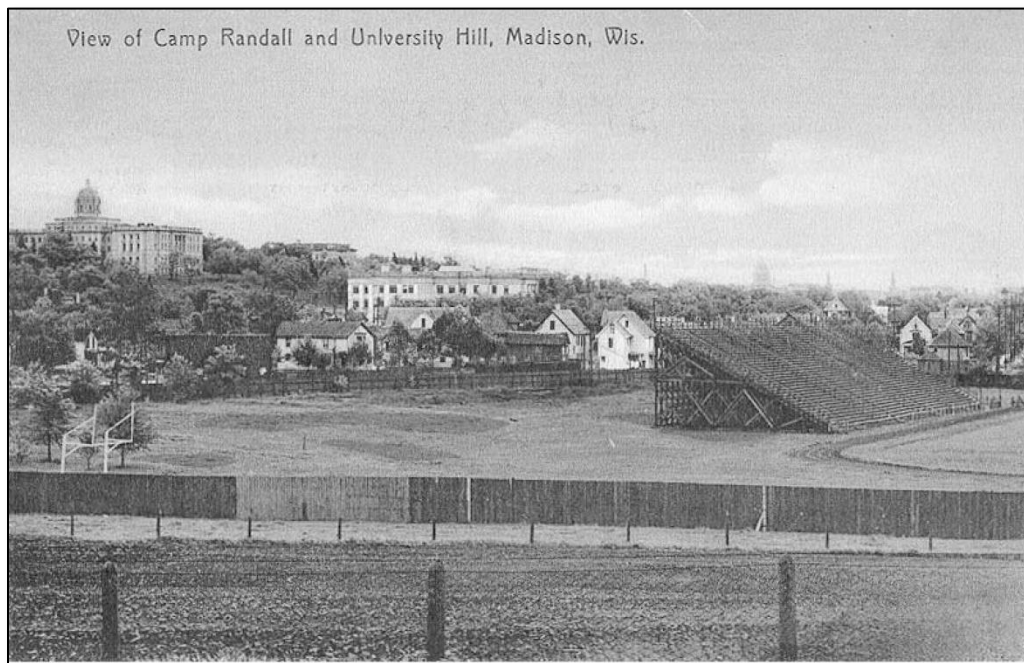


Sketch of Camp Randall done by William Fiske Brown as a soldier of the 40th Wisconsin Volunteer Infantry, Company B in 1864. SHSW Archives Album 13.118.

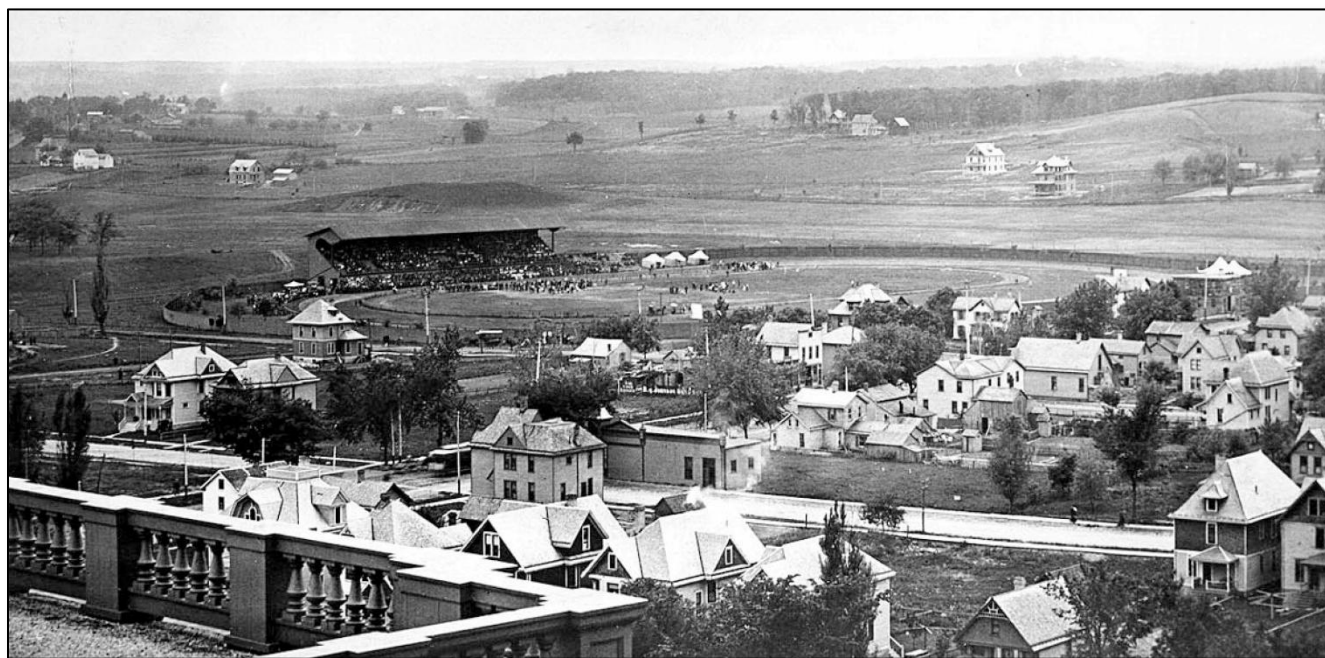


See more classroom materials and lesson plans on the Wisconsin Historical Society website.

Camp Randall Stadium and University Hill around 1898. PF: University of Wisconsin.



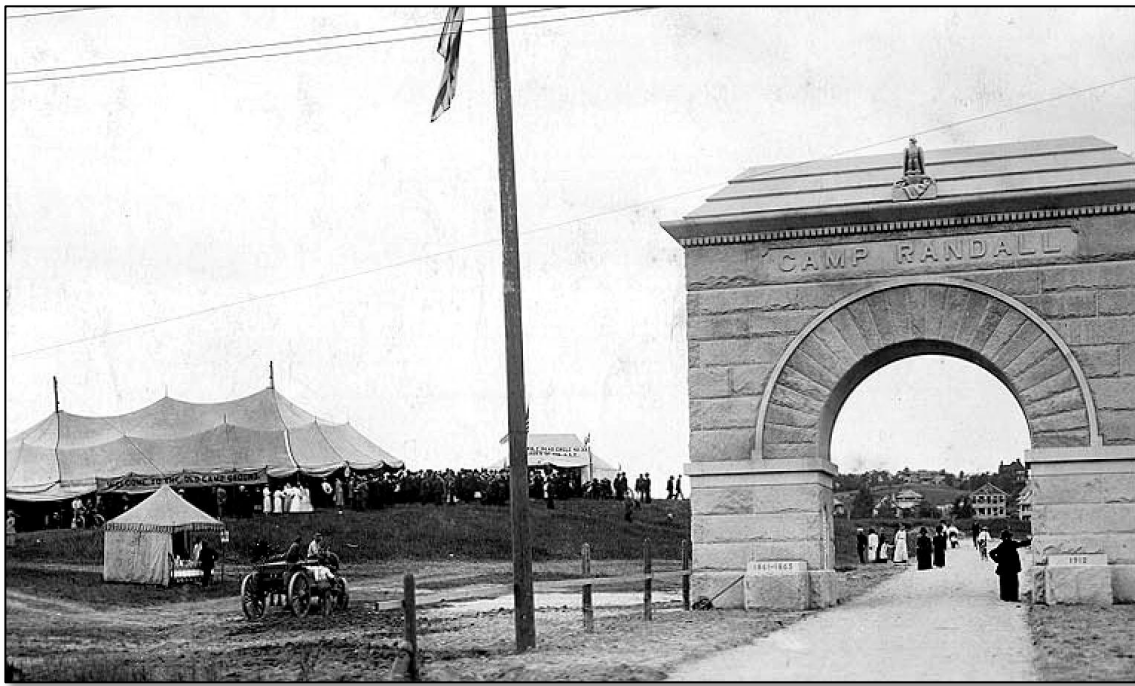
View of Camp Randall Field from the University of Wisconsin Chemistry Building in the early 1900's. WHI (X28)3719.



See more classroom materials and lesson plans on the Wisconsin Historical Society website.

wisconsinhistory.org

Dedication of the Camp Randall Memorial Arch on June 19, 1912. WHI (X3) 36167.



Dedication of the Camp Randall Memorial Arch on June 19, 1912. WHI (X3)34400.



See more classroom materials and lesson plans on the Wisconsin Historical Society website.

wisconsinhistory.org

Camp Randall and Field House in 1934. WHI (X3)34401.



Camp Randall Civil War Guard House. WHI (X3)14976.



Camp Randall Stadium with married student housing in the forefront in 1945. WHI (D479)15817.

See more classroom materials and lesson plans on the Wisconsin Historical Society website.

Camp Randall Stadium and surrounding area in 1954. WHI (N48) 5470.



Civil War cannon displayed at Camp Randall near the corner of Randall and Dayton Streets. The cannon was captured at the Battle of Shiloh. WHI (X32) 3302.



See more classroom materials and lesson plans on the Wisconsin Historical Society website.

wisconsinhistory.org

Camp Randall Stadium and Field House.
1996 Photo ©UW-Madison University Communications, 608-262-0067.



See more classroom materials and lesson plans on the Wisconsin Historical Society website.

wisconsinhistory.org

1996 Photo ©UW-Madison University Communications, 608-262-0067Aerial of UW-Madison campus including Camp Randall Stadium during a football game and looking toward Lake Mendota.



See more classroom materials and lesson plans on the Wisconsin Historical Society website.

wisconsinhistory.org